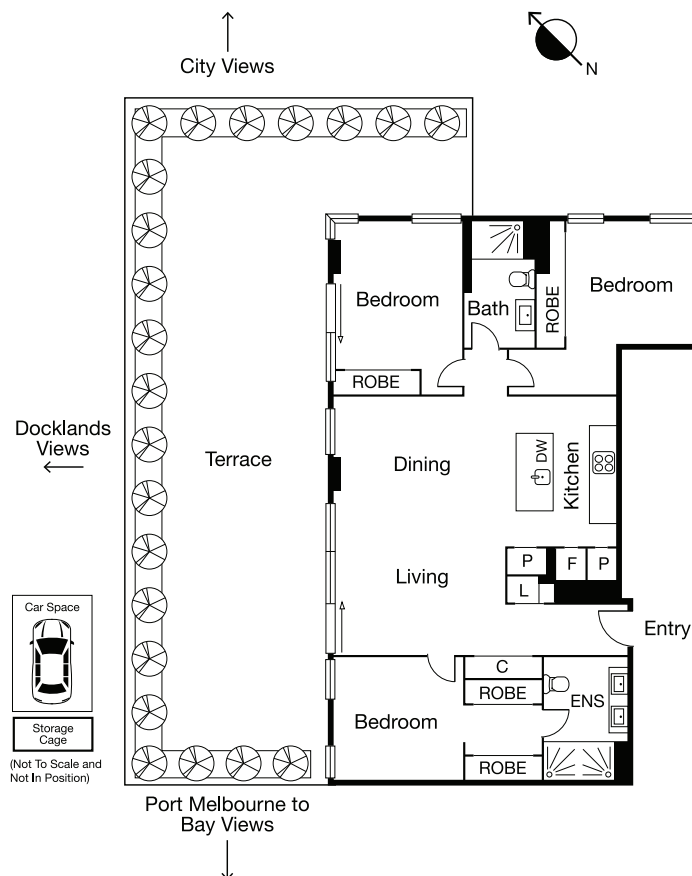


SOUTH MELBOURNE 605/165-167 Gladstone Street



CAYZER

SOUTH MELBOURNE 605/165-167 Gladstone Street



PENTHOUSE LIVING

- Enormous 95 sqm terrace offers spectacular unobstructed panoramic 270-degree views over the CBD, Docklands, Port Melbourne, St Kilda, the bay and beyond
- Combined area of over 205 sqm, with a secure car park and large storage cage
- This unique terrace is an entertainer's paradise enjoying spectacular sunsets whilst overlooking the beauty of the city and the bay. Central open plan kitchen, master bedroom with walk-through robe to ensuite containing dual shower heads and two further double bedrooms with built-in robes.
- This bright penthouse also features a separate central bathroom. Reverse-cycle heating and cooling to each bedroom and living area, as well as smart wired in-ceiling surround sound speakers. Bathrooms and kitchen feature LED strip lighting, with TV ports also available in every bedroom.

3 2 1 + Storage Cage

For Sale

Inspection As advertised or by appointment

Contact Michael Szulc 0417 122 809
Jason De Stefano 0413 292 666

Mel Ref 57 D1



Interactive Floorplan

CAYZER

Albert Park 330 Montague Street 03 9699 5999
Port Melbourne 370 Bay Street 03 9646 0812

cayzer.com.au

Every care has been taken to ensure the information contained in this document is accurate. The diagrams/plans are a representation only and are not to scale. Interested parties should seek independent legal advice. Cayzer Real Estate Pty Ltd does not accept any responsibility or liability as a result of the information provided in this document. If your property is currently listed for sale with another agent, please disregard this notice. | Cayzer Real Estate Pty Ltd | CRE20501-043 240619